

# CHURCH STREET NEWS

Bringing you the latest news from the neighbourhood of Church Street

## IN THIS ISSUE

Church Street Christmas Lights Switch On  
Winter in the City  
Gain a New Skill With My Skills Zone  
Local Community Founder Wins Award



## CHRISTMAS LIGHTS SWITCH ON ADDS FESTIVE SPARKLE

**C**hurch Street sparkled as the Deputy Lord Mayor of Westminster switched on the Christmas lights to mark the start of the festive season. Residents were treated to festive music by local choirs including Gateway Academy, Penfold Hub and South Westminster Choir. A special sneak peek performance by The Cockpit Theatre with songs from its festive musical 'Fairytale on Church Street' also got the crowd moving.

Santa brought Christmas cheer to our younger residents, while arts and crafts and henna tattoos were enjoyed by all ages. To warm us all up, local market traders served delicious hot food and drinks. See more pictures from the event on page 2.



Continued from front page.

# CHRISTMAS HIGHLIGHTS



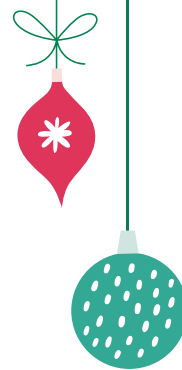
Gateway Academy Choir.

## A SPECIAL THANK YOU

The event wouldn't be possible without our fantastic community and local organisations and partners. A special thank you to:

- Gateway Academy, Penfold Hub and South Westminster Choirs.
- The Cockpit Theatre and performers of 'Fairytale of Church Street'.
- Baker Street Quarter Partnership, Fortius Clinic and Cuttle Construction for their donations and gifts.
- St Paul's Church Marylebone for running the arts and crafts stall.
- Tesco Church Street for donating food parcels.
- Market traders Paella Brothers and Sara Falafel who provided refreshments.
- Everyone who attended and brought Christmas joy.

The Church Street Regeneration Team would like to wish everyone a very enjoyable and happy festive season.



Performance of The Cockpit Theatre's 'Fairytale on Church Street.'



Making Christmas cards at the art and crafts stall.



The Deputy Lord Mayor Hamza Taouzzale and Church Street Ward Cllr Aicha Less speak with residents.



Food and drink was served throughout the event.

# PREPARING FOR NEXT STAGES OF SITE A DEMOLITION

**T**o prepare for future stages of the Site A demolition we are now looking to engage with demolition contractors early to identify the best possible management of the site.

As part of the process, we intend to implement our Code of Construction Practice to control any impacts from construction activities. This includes submitting a Construction Environment Management Plan (see below).

## CONSTRUCTION ENVIRONMENT MANAGEMENT PLAN

This will help us establish early principles for how we manage and minimise impact to local residents and businesses about working hours, noise, traffic access and waste management. This will help us work with a future demolition contractor that we expect to appoint in Spring 2024.

Once a contractor is appointed, we will continue to share further information and detail about how it will work with us, along with opportunities to meet the contractor team.

## SITE OPERATING HOURS



It is proposed this would be between 8am to 6pm Monday to Friday and 8am to 1pm on Saturdays. No works will be carried out on Sundays or bank holidays.



## ACCESS AND DELIVERIES

Primary vehicle access for the site is proposed via a gated entrance located on Broadley Street. All vehicles into and out of the site and crossing footpaths will be controlled by dedicated traffic marshals. All gates will be controlled to give the minimum amount of time open for passage of vehicles to minimise vehicle noise impacts on the locality.

## MINIMISING NOISE AND DISRUPTION

Where possible, equipment deemed to be disruptive will be located away from sensitive buildings. Dust, noise, vibration and air quality monitors will be set up in key locations around the site and will trigger an alert to pause work if these are exceeded.

Data will be continuously recorded and a site manager will be recording and monitoring alerts. These measures would be based on the Mayor's Best Practice Guidance (The Control of Dust and Emissions from Construction and Demolition).



Map of Site A, Blue markers indicates proposed locations of noise and dust monitors.

## SITE SET UP AND SECURITY

Site accommodation and welfare facilities will be provided for staff to minimise the impact to pedestrian traffic around the site during the busy periods of the day. Initially, the site welfare office will be established within the existing building at Ground Floor level but relocated to external cabins prior to the start of demolition. Protective scaffold will be erected over public footpaths to enable pedestrian foot traffic to continue as usual during the work.

## WASTE MANAGEMENT

We will be encouraging reuse and recycling on-site through a dedicated waste management strategy. Rubbish will not be allowed to accumulate and cause a fire hazard, and all waste will be collected from site in skips.



We welcome your feedback on the proposed plan and the potential impacts. Please email us at [churchstreet@westminster.gov.uk](mailto:churchstreet@westminster.gov.uk)



## WINTER IN THE CITY

**T**o support our residents this winter, we are delivering urgent support to those who need it most with our Winter in the City programme.

We know that many of our residents are facing a living standard crisis, due to rising costs of energy bills and food. The Winter in the City programme will include a network of safe and welcoming indoor venues for residents to enjoy free community and cultural activities as well as a warm space to socialise in, and hot food and drinks for anyone who would like it.

In addition to free, welcoming spaces we have a range of advice around financial support, food services, energy help and ways to deal with rent increases. More details can be found at our website [westminster.gov.uk](http://westminster.gov.uk) and searching 'Winter in the City' or you can scan the QR code.



## GAIN A NEW SKILL WITH MY SKILLS ZONE

**M**y Skills Zone is a free, online training platform with a range of courses tailored to suit your needs. The courses include leadership skills and coaching. There are over 2,000 free courses to choose from. To register, go to [myskillszonewcc.careercentre.me/welcome/my-skills-zone](https://myskillszonewcc.careercentre.me/welcome/my-skills-zone)



## NORTH WESTMINSTER WOMEN'S HAFLA

**L**earn about what's going on in your area and celebrate Middle Eastern culture. Meet our Communities team, enjoy some delicious Arabic food, have fun and dance the evening away. Join in: **19 January, 4.30pm to 7pm, Greenside Community Centre 24 Lilestone St, NW8 8SR.**

No booking required. For more information contact Ava Piper, Community Development Project Manager at [apiper-masha@westminster.gov.uk](mailto:apiper-masha@westminster.gov.uk)

## LOCAL COMMUNITY FOUNDER WINS AWARD

**C**ongratulations to Paola Andrea Gianelli who won the 'One You' Award for Helping Adults at the Active Westminster Awards 2023. Paola has been recognised for dance classes she has delivered to Church Street residents as part of our Fun 4 Over 50's Communities Priorities Programme.

Her award recognises the contribution she has provided in building relationships and changing the lives of those experiencing loneliness and social isolation. If you'd like to find out more about Paola's dance classes, you can email [fun4over50s@hotmail.com](mailto:fun4over50s@hotmail.com)



Award winning Paola with Clr Hamza Taouzzale.

## CHRISTMAS RECYCLING

**Y**our local recycling drop off point for real Christmas trees will be at Broadley Street Gardens (at the corner of Penfold Street) from **Wednesday 27 December 2023 to Wednesday 10 January 2024**. To find out information on recycling and rubbish collection during the festive season, scan the QR code.



## FIND OUT MORE

### GO ONLINE

You can keep track of the latest news on the Church Street website at [churchstreet.org](http://churchstreet.org)

### IF YOU HAVE A QUESTION

Please email us at [churchstreet@westminster.gov.uk](mailto:churchstreet@westminster.gov.uk)

### SPEAK IN PERSON

Contact us to talk to a member of our Regeneration Team **020 7641 2968**

You can also visit us at **Regeneration Base, 99 Church Street, NW8 8EY**. Open from Monday to Friday, 9am to 5pm.